

PJS Solutions Partition System F60S Technical Data - 9m High

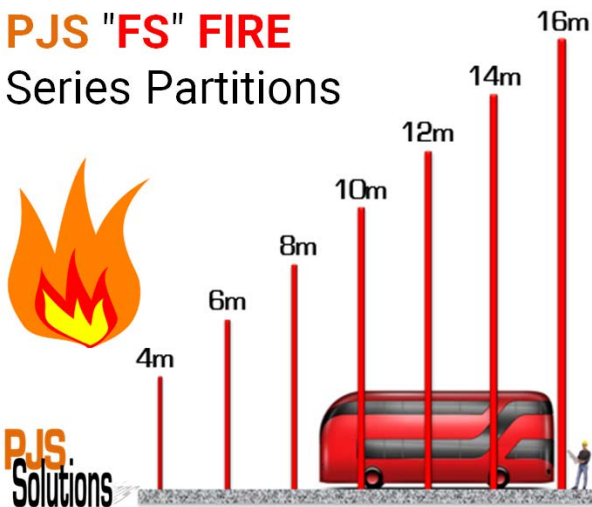


https://pjssolutions.co.uk/pjs_f60s_fire_rated_series_partitions/

Max Build Height = 15m

F60S Smooth Painted Finish

PJS "FS" FIRE Series Partitions



Installed by PJS Solutions

PJS Solutions Robust Partition System “F60S” has been designed to achieve 1 hour fire resistance up to heights of 15m using PJS heavy gauge steel sections clad with **PJS** robust performance boards with mineral wool infill to give excellent acoustic ratings. This system can be upgraded to achieve higher thermal & acoustic values. There are many options for heavy traffic / fork lift protection. **PJS Solutions** supply and install 1 hour fire rated fixed windows, doors & automated roller shutter doors to compliment the “F60S” system.

The **PJS Solutions** “F60S” system only uses **PJS** robust performance boards. **PJS** robust performance boards are inherently very much stronger than conventional plasterboard and, as well as its strength and acoustic properties, it also provides fire, impact, and moisture resistance. The strength comes from its gypsum matrix, which is reinforced with recycled paper and, because of its higher density, is far more effective in reducing sound transmission.

Robust performance Table:

Wall Height, up to:	<7m	<8m	<9m	<10 m	<11 m	<12 m	<13 m	<14 m	<15 m
Fire Rating (hours)	1	1	1	1	1	1	1	1	1
Stud Size (mm)	140	140	140	200	200	230	260	300	350
Stud Gauge (mm)	1.2	1.6	2.0	1.6	2.0	1.6	2.0	2.0	2.0
Stud Centres (mm)	600	600	600	600	600	600	600	600	600
PJS robust performance boards both sides (mm)	12.5	12.5	12.5	12.5	12.5	12.5	12.5	12.5	12.5
Mineral Wool 45kg/m3 (mm)	75	75	75	75	75	75	75	75	75
System weight / m2 (approx.)	39	41	46	47	52	54	59	62	69
Acoustic Sound Rating (dB)	Basic rating = 54dB, can be upgraded to 68dB								
U-values W/m2k	Standard rating = 0.4 W/m2k upgradable to 0.18 W/m2k								

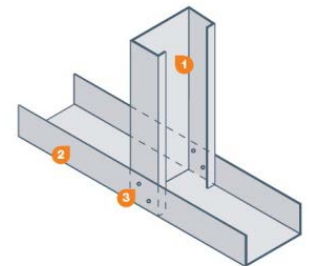
Wall Lay Out & Components:

Partition systems range in height from 2.0m high up to 15m high, The 1 hour fire rating is backed by Warrington Fire Certificate. There is no limit to the length of the wall.

PJS Standard Boards 1 x layer of Square edge PJS robust performance board fixed with PJS screws to steel stud using PJS Joint stick at board edges.
 Dimension = 2400 x 600 x 12.5mm
 Weight per m² = 15 kg

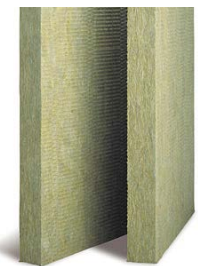


C Studs From 150mm web / 54mm Flange / >12mm Lip / 1mm gauge
 Maximum 350mm wide / 90mm Flange / >19mm Lip / 3mm gauge

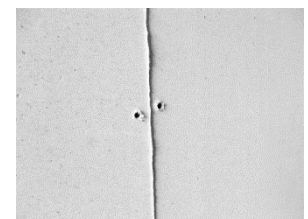


Channel From 154mm web / 70mm Flange / 1mm gauge
 Maximum 354mm web / 90mm Flange / 3mm gauge

Mineral Wool Slab Insulation Mineral Universal Slab
 From 75mm thick x 600mm x 600mm
 Density from 45kg/m³ up to 100kg/m³



PJS Joint stick For edge gluing PJS boards



PJS Joint Filler For filling gap between boards and stopping screw heads

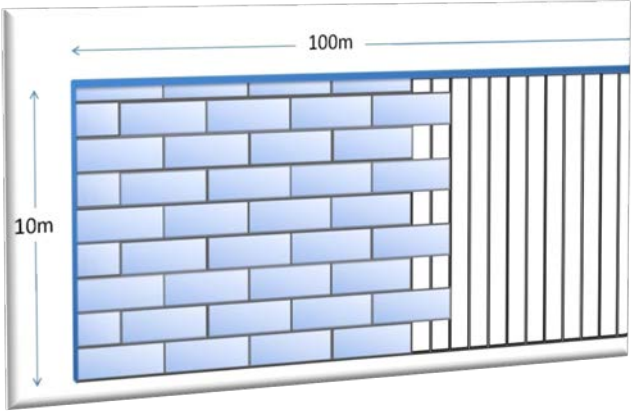
Installed by PJS Solutions

PJS Fine Surface Treatment

For giving PJS boards a smoother finish if required



Advantages of PJS robust performance boards:

- **PJS** robust performance boards is a class '0' and class '1' Board and provides F60S applications from single layer constructions up to 15m high.
 - **PJS** robust performance boards waterproofing application system to give peace of mind. It can withstand humidity levels of up to 80% Rh. Maybe installed before building envelope is complete
 - **PJS** robust performance boards is strong enough to use in schools, sports halls and hospitals, reducing the need for ply-backing. PJS robust performance meets BS 5234:part 2 Severe Duty Rating.
 - **PJS** robust performance boards is high load bearing and can carry up to 30kg from a single screw and up to 50kg from 2 wall plug fitting which virtually eliminates the need for noggins
- 
- **PJS** robust performance boards meets and exceeds Part E B893 and HTM 2045 requirements. It can be used for walls, ceilings or floors where sound proofing is required. A 100 mm wide stud wall with PJS robust performance gives better acoustic reduction than a 275mm block wall.



Deflection Head Details: Deflection head details are designed for each specific building taking into account roof crush factor and extreme wind loadings; please email technical@pjssolutions.co.uk we will be pleased to assist you.

PJS BOARD Dimensional tolerances at constant humidity – Board dimensions	
Length	± 1 mm
Width	± 1 mm
Diagonal difference	≤ 2 mm
Thickness: 10 / 12.5 / 15 / 18	± 0.3 mm
Nominal density, strength	
Nominal density (production target)	1150 ± 50 kg/m ³
Bending strength (after drying at 40°C), at right angles to the board surface	≥ 5.8 N/mm ²
Transverse strength	≥ 0.3 N/mm ²
Certified tensile values according to DIN 1052 (Permit No: Z-9.1-434)	
Bending perpendicular to the board surface	1.2 N/mm ²
Bending in board surface	1.1 N/mm ²
Tension in board surface	0.5 N/mm ²
Pressure in board surface	2.0 N/mm ²
Pressure perpendicular to the board surface	2.5 N/mm ²
Shearing in board surface	0.3 N/mm ²
Shearing perpendicular to the board surface	0.6 N/mm ²
Modulus calculations (Permit No. Z-9.1-434)	
E-Modulus perpendicular to the board surface	3800 N/mm ²
E-Modulus parallel to the board surface	3800 N/mm ²

E-Modulus tension	3800 N/mm ²
E-Modulus compression	3800 N/mm ²
Shearing modulus G perpendicular to the board surface	1600 N/mm ²
Shearing modulus G bending in the board surface	1600 N/mm ²
Additional data	
Vapour Resistance	μ 13
Thermal conductivity	0.32 W/mK
Specific heat capacity c	1.1 kJ/kgK
Brinell hardness	30 N/mm ²
Swelling after 24 hrs saturation	< 2%
Thermal co-efficient of expansion	0.001%/K
Expansion/shrinkage on alteration of the relative humidity of 30% (20°C)	0.25 mm/m
Moisture content at 65% relative air humidity and 20°C air temperature	1.3%
Construction material category according to DIN 4102 Part 1 (non-combustible)	A2
pH value	7-8
Characteristic strength and stiffness values of PJS robust performance boards in N/mm² for design calculation according to DIN 1052 (Test report No: Z-9.1-434/ETA-03/0050)	Thickness of board in mm
	10 12.5 15 18
Perpendicular to the plane of the board	
Bending fm,k	4.6 4.3 4.0 3.6
Shear fv,k	1.9 1.8 1.7 1.6
In plane of the board	
Bending fm,k	4.3 4.2 4.1 4.0
Tension ft,k	2.5 2.4 2.4 2.3
Compression fc,k	8.5 8.5 8.5 8.5
Shear fv,k	3.7 3.6 3.5 3.4

PJS Boards

Sizes (mm)	10	12.5	15	18
Weight per m ² (kg)	11.5	15	18	21
Square edge Boards				
1500 x 1000 mm	•	•	•	•
600 x 600 mm	•	•	•	•
2400 x 600 mm	•	•	•	•
2700 x 600 mm	•	•	•	•
3000 x 600 mm	•	•	•	•
Tapered edge Boards				
600 x 800 mm (4 s.)		•		



Telephone: 01425 472748
Email: enquiries@pjssolutions.co.uk
Website: www.pjssolutions.co.uk

Installed by PJS Solutions

2400 x 600 mm (4 s.)	•
2400 x 600 mm (2 s.)	• •
Specially cut sizes on request	